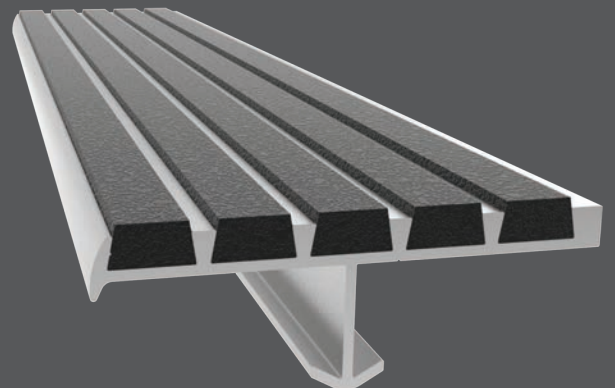


NEW

Introducing the industry's
only sustainable safety
treads:

EcoTread™ Stair Nosings.

- Made from 90% recycled rubber
- 100% recyclable materials
- Fade and wear resistant
- Easy to clean and maintain
- Easily replaceable
- Contemporary color choices



EcoTread™
STAIR TREADS + NOSINGS

EcoTread™

STAIR TREADS + NOSINGS

Sustainability, one step at a time.

The EcoTread Stair Nosings offer a sustainable and ecofriendly material option. An industry first, these treads are engineered with recycled aluminum and rubber. Multiple tread options provide a wide variety of coordinating color options that are perfect for both interior and exterior use.

FADE + WEAR RESISTANT
A durable product that will stand up to weather extremes and foot traffic.

EASILY REPLACEABLE
Should a tread get damaged, replacement insert installation is quick and easy.

CONTEMPORARY COLOR CHOICES
Choose from 11 EcoTread color options to complement your building aesthetics.

RECYCLED + RECYCLABLE
These sustainable treads are made from 90%† recycled rubber and the entire system is 100% recyclable.

EASY TO CLEAN + MAINTAIN
These stain and chemical resistant treads are coated with a water-based protectant.

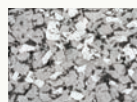
OPTIONS



Black EcoTread[†] 90%



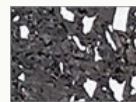
Safety Yellow EcoTread 5%



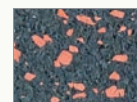
Gray/Black EcoTread 10%



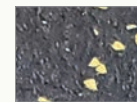
Blue EcoTread 84%



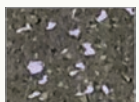
Gray EcoTread 84%



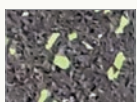
Red EcoTread 84%



Yellow EcoTread 84%



Purple EcoTread 84%



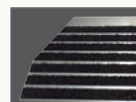
Green EcoTread 84%



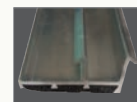
Blue/Gray EcoTread 84%



Red/Gray EcoTread 84%



Mitered Cuts

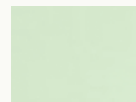


Painted Undersides

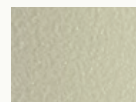


Taped Tops

Photoluminescent



Resin Strip (BSTSM, BSTRM & BSTTM only)



Abrasive Grit Strip (STSM, STRM & STTM only)



*Colors shown give only an indication of shade. Samples are available upon request.
†90% recycled rubber available in Black EcoTread only. All other recycled content noted by color swatches.*

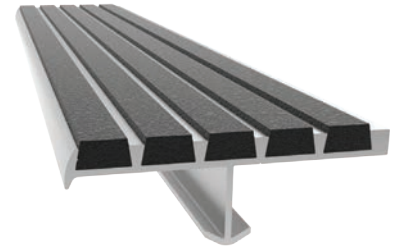


Ribbed Abrasive

STAIR TREADS + NOSINGS

MODELS

MODEL	WIDTH	NOSING	TREAD INSERT	INSTALL
BSTSB-C1.875E-ECO	1-7/8"	Short	EcoTread	Cast-In, Extruded Anchor
BSTSB-C1.875D-ECO	1-7/8"	Short	EcoTread	Drilled Hole, Mech. Fastened
BSTSB-P1.875E-ECO	1-7/8"	Short Tipped	EcoTread	Cast-In, Extruded Anchor
BSTSB-P1.875D-ECO	1-7/8"	Short Tipped	EcoTread	Drilled Hole, Mech. Fastened
BSTSB-L1.875E-ECO	1-7/8"	Long	EcoTread	Cast-In, Extruded Anchor
BSTSB-L1.875D-ECO	1-7/8"	Long	EcoTread	Drilled Hole, Mech. Fastened
BSTSB-A1.875D-ECO	1-7/8"	Angled Long	EcoTread	Drilled Hole, Mech. Fastened
BSTSB-C3E-ECO	3"	Short	EcoTread	Cast-In, Extruded Anchor
BSTSB-C3D-ECO	3"	Short	EcoTread	Drilled Hole, Mech. Fastened
BSTSB-P3E-ECO	3"	Short Tipped	EcoTread	Cast-In, Extruded Anchor
BSTSB-P3D-ECO	3"	Short Tipped	EcoTread	Drilled Hole, Mech. Fastened
BSTSB-L3E-ECO	3"	Long	EcoTread	Cast-In, Extruded Anchor
BSTSB-L3D-ECO	3"	Long	EcoTread	Drilled Hole, Mech. Fastened
BSTSB-A3E-ECO	3"	Angled Long	EcoTread	Cast-In, Extruded Anchor
BSTSB-A3D-ECO	3"	Angled Long	EcoTread	Drilled Hole, Mech. Fastened
BSTSB-C4E-ECO	4"	Short	EcoTread	Cast-In, Extruded Anchor
BSTSB-C4D-ECO	4"	Short	EcoTread	Drilled Hole, Mech. Fastened
BSTSB-P4E-ECO	4"	Short Tipped	EcoTread	Cast-In, Extruded Anchor
BSTSB-P4D-ECO	4"	Short Tipped	EcoTread	Drilled Hole, Mech. Fastened



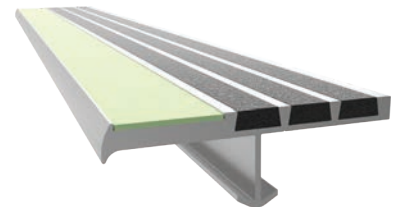
*Ribbed Bar Abrasive
BSTSB-P3E-ECO shown*

Lume-A-Lite™

STAIR TREADS + NOSINGS

MODELS

MODEL	WIDTH	NOSING	TREAD/INSERT	INSTALL
BSTSM-P3E-ECO	3"	Short Tipped	EcoTread and Photoluminescent Resin Strip	Cast-In, Extruded Anchor
BSTSM-P3D-ECO	3"	Short Tipped	EcoTread and Photoluminescent Resin Strip	Drilled Hole, Mech. Fastened
BSTSM-P3E-T-ECO	3"	Short Tipped	EcoTread and Photoluminescent Abrasive Grit Strip	Cast-In, Extruded Anchor
BSTSM-P3D-T-ECO	3"	Short Tipped	EcoTread and Photoluminescent Abrasive Grit Strip	Drilled Hole, Mech. Fastened



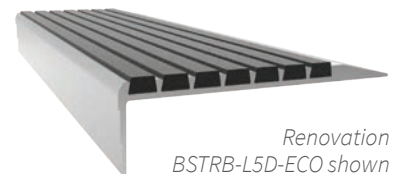
*Lume-A-Lite™
BSTSM-P3E-ECO shown*

Renovation

STAIR TREADS + NOSINGS

MODELS

MODEL	WIDTH	NOSING	TREAD	INSTALL
BSTRB-L5D-ECO	5"	Long	EcoTread	Drilled Hole, Mech. Fastened
BSTRB-L9D-ECO	9"	Long	EcoTread	Drilled Hole, Mech. Fastened
BSTRB-L11D-ECO	11"	Long	EcoTread	Drilled Hole, Mech. Fastened
BSTRB-A5D-ECO	5"	Angled Long	EcoTread	Drilled Hole, Mech. Fastened
BSTRB-A9D-ECO	9"	Angled Long	EcoTread	Drilled Hole, Mech. Fastened
BSTRB-A11D-ECO	11"	Angled Long	EcoTread	Drilled Hole, Mech. Fastened



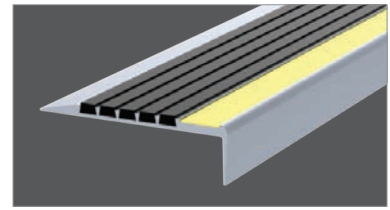
*Renovation
BSTRB-L5D-ECO shown*

Lume-A-Lite™ Rennovation

STAIR TREADS + NOSINGS

MODELS

MODEL	WIDTH	NOSING	TREAD/INSERT	INSTALL
BSTRM-L5D-ECO	5"	Long	EcoTread and Photoluminescent Resin Strip	Drilled Hole, Mech. Fastened
BSTRM-A5D-ECO	5"	Angled Long	EcoTread and Photoluminescent Resin Strip	Drilled Hole, Mech. Fastened
BSTRM-L5D-T-ECO	5"	Long	EcoTread and Photoluminescent Abrasive Grit Strip	Drilled Hole, Mech. Fastened
BSTRM-A5D-T-ECO	5"	Angled Long	EcoTread and Photoluminescent Abrasive Grit Strip	Drilled Hole, Mech. Fastened



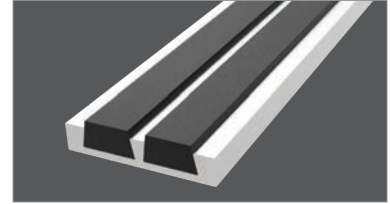
*Lume-A-Lite™ Rennovation
BSTSM-L5D-ECO shown*

Inset

STAIR TREADS + NOSINGS

RIBBED MODELS

MODEL	WIDTH	TREAD	INSTALL
BSTSB-N1.375D-ECO	1-3/8"	EcoTread	Drilled Hole, Mech. Fastened
BSTSB-N1.375E-ECO	1-3/8"	EcoTread	Cast-In, Extruded Anchor
BSTSB-N3D-ECO	3"	EcoTread	Drilled Hole, Mech. Fastened
BSTSB-N3E-ECO	3"	EcoTread	Cast-In, Extruded Anchor



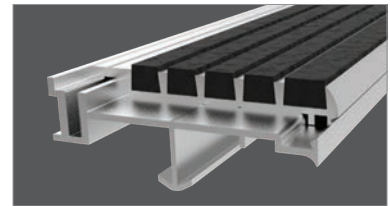
*Inset
BSTSB-N1.375D-ECO shown*

Two-Part

STAIR TREADS + NOSINGS

RIBBED MODELS

MODEL	WIDTH	TREAD	INSTALL
BSTTB-P3.375E-ECO	3-3/8"	EcoTread	Extruded Anchor



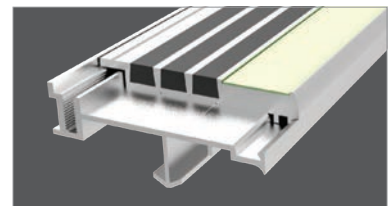
*Two-Part
BSTSB-P3.375D-ECO shown*

Lume-A-Lite™ Two-Part

STAIR TREADS + NOSINGS

RIBBED MODELS

MODEL	WIDTH	TREAD	INSTALL
BSTTM-P3.375E-ECO	3-3/8"	EcoTread and Photoluminescent Resin Strip	Cast-In, Extruded Anchor
BSTTM-P3.375E-T-ECO	3-3/8"	EcoTread and Photoluminescent Abrasive Grit Strip	Cast-In, Extruded Anchor



*Two-Part
BSTSB-P3.375D-ECO shown*



9300 73rd Avenue North
Minneapolis, MN 55428

Phone (888) 412-3726

Fax (866) 916-6672

